

# AlcoTrack™

## Calibration Quick Guide

## **Alcohol Countermeasure Systems Corp**

60 International Boulevard  
Toronto, Ontario M9W 6J2 CANADA

T +1 416 619 3500

F +1 416 619 3501

info@acs-corp.com

acs-corp.com

ACS, ALCOHOL COUNTERMEASURE SYSTEMS, ALCOLOCK, INTERTRACK and the “Molly” are trademarks of Alcohol Countermeasure Systems (International) Inc. and are used under license. Alcohol Countermeasure Systems is the trading style of Alcohol Countermeasure Systems Corp.

All content in this document, inclusive but not limited to the text, images and trademarks mentioned therein, is owned by Alcohol Countermeasure Systems (International) Inc. [“ACS”] and used under license by its affiliated companies. All copyright and other proprietary rights to this content are reserved. No reproduction of this document, in whole or in part, is permitted without the prior written consent of ACS.

This document, and the content contained therein, can be used only for purposes relating to the ALCOLOCK™ ignition interlock program.

While reasonable efforts are made to ensure that the contents of this document are accurate, this document is provided on an “as is,” “as available” basis, without warranties of any kind, including any warranties of accuracy. Because some jurisdictions do not permit the exclusion of certain warranties, these exclusions may not apply to you. In no event will ACS or its affiliates be liable for any incidental, indirect, consequential, or special damages of any kind, or any damages whatsoever arising out of or in connection with the use of this document or its contents.

The ALCOTRACK™ platform contains personal information. Unauthorized release of personal information can result in civil and criminal liability. By using the ALCOTRACK platform, you accept your responsibility to refrain from any use or disclosure of the personal information contained in the ALCOTRACK™ platform otherwise than as required as part of your employment or otherwise required by law. **Keep your login credentials confidential.**

## **©2017 Alcohol Countermeasure Systems**

The information disclosed in this document is the valuable property of Alcohol Countermeasure Systems and all copyright and other proprietary rights to this document are reserved. No reproduction of this document is permitted without the prior written consent of Alcohol Countermeasure Systems.



1. Log in to the ALCOLOCK Communicator (ALC) application.
  - a. Click on the ALC shortcut on the desktop.



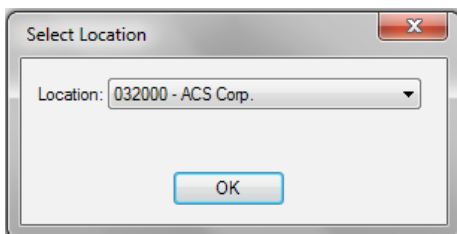
- b. Enter your jurisdiction and login credentials.



The screenshot shows a window titled "ALCOLOCK Communicator - Log In". It contains four text input fields: "Jurisdiction:" with the value "032", "First name:", "Last name:", and "Password:". Below the fields is a blue link that says "Forgot password?". At the bottom are two buttons: "OK" and "Quit".

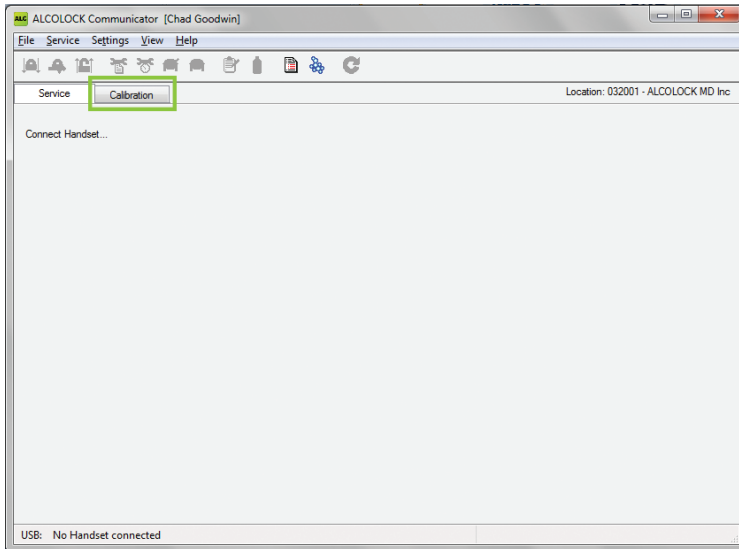
NOTE: Login credentials are case sensitive.

2. Select the appropriate service center (if applicable).

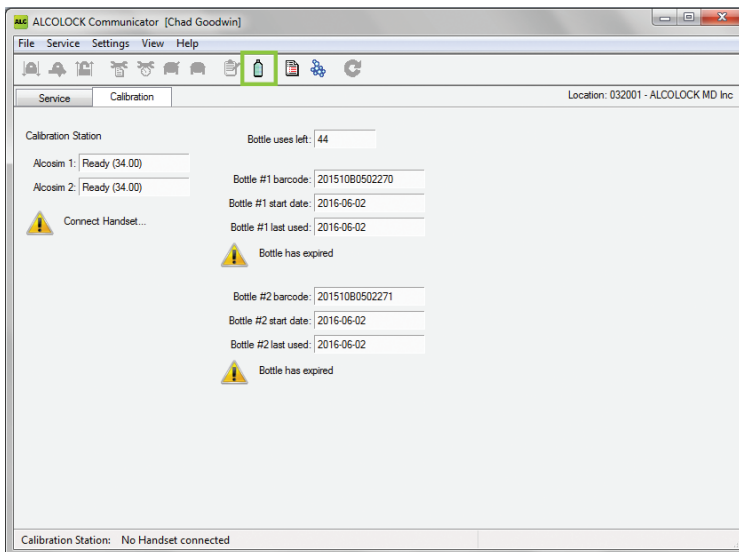


The screenshot shows a window titled "Select Location". It contains a dropdown menu labeled "Location:" with the selected value "032000 - ACS Corp.". Below the dropdown is an "OK" button.

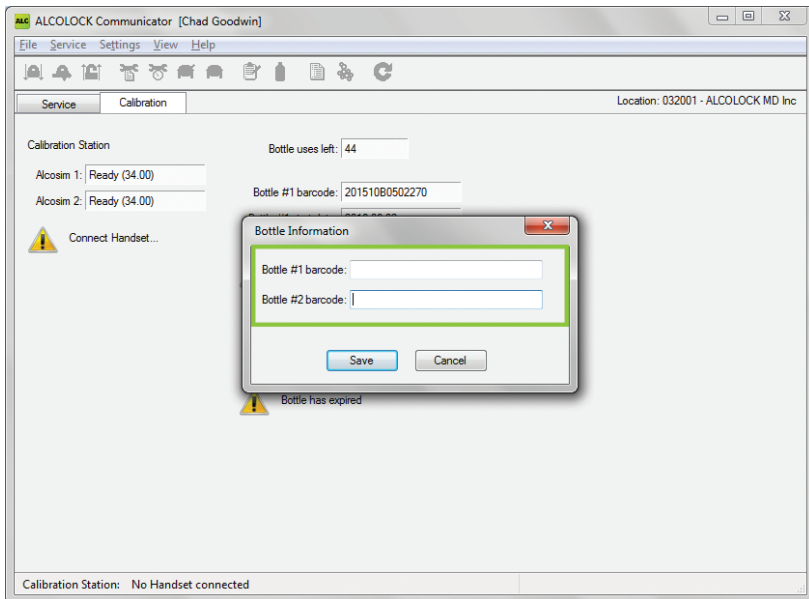
3. In the Service Type field, select Handset Return from the drop-down menu.



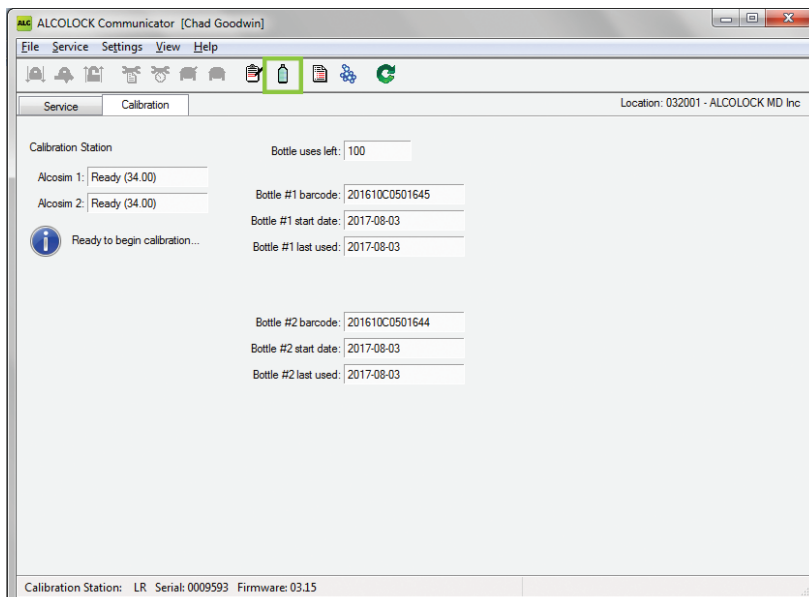
4. Select the Bottle icon to update the bottle information if it is out of date. If the bottles are not expired, go to step 6.



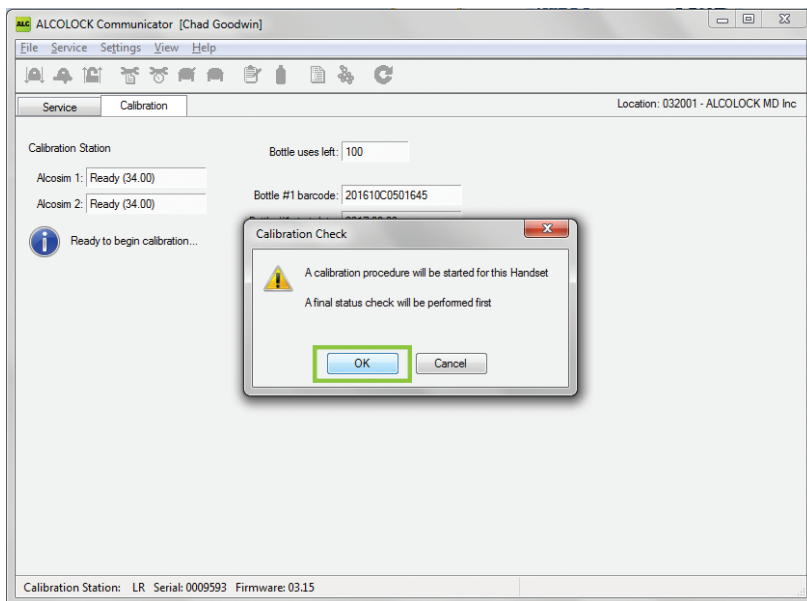
- Using the scanner, scan the barcode of each bottle into the appropriate field. Click Save when finished.



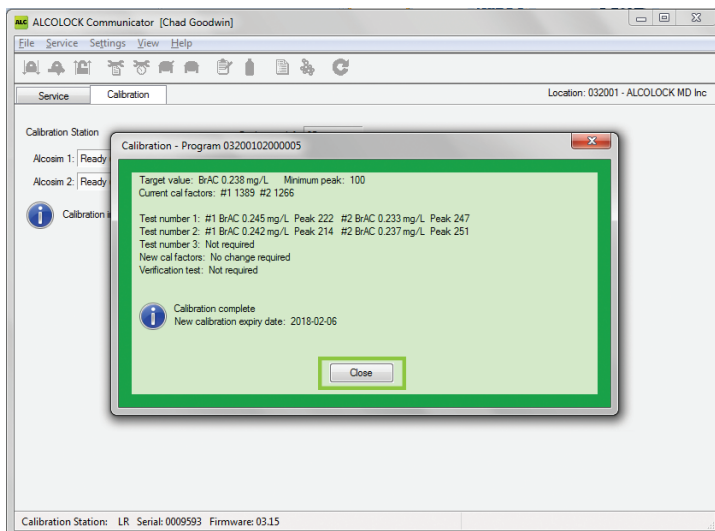
- Connect the handset and select the Clipboard icon to start calibration.



7. A popup will appear. Click OK to confirm that calibration is to be completed.



8. If calibration is good, the box will turn green. Select Close.



9. If calibration is not good, the box will turn red and advise why the calibration failed.

