

DrugWipe® S

Drug Screening Solutions

Available through:



Alcohol Countermeasure Systems

5776 Hoffner Avenue, Suite 303
Orlando, FL 32822

1 877 227 7112

acs-corp.com
drugwipeusa.com

ACS, ALCOHOL COUNTERMEASURE SYSTEMS and the "Molly" are trademarks of Alcohol Countermeasure Systems (International) Inc. and are used under license.

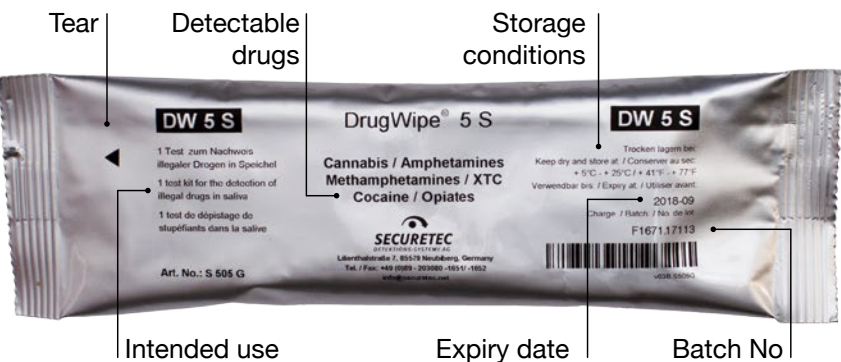
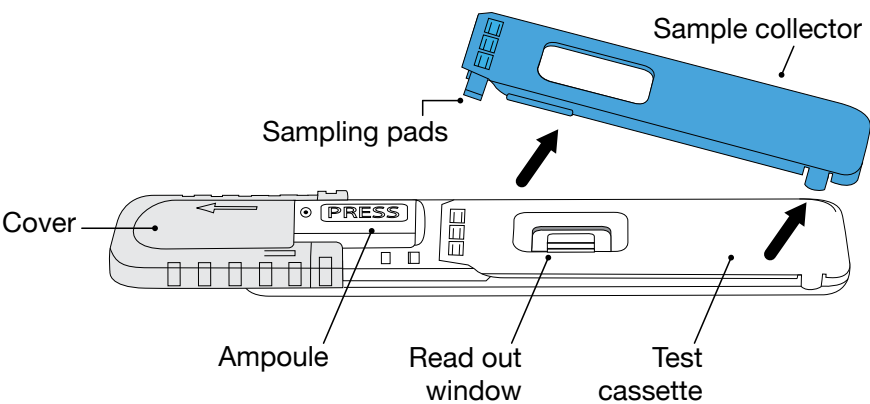
DrugWipe and WipeAlyser are registered trademarks of Securetec Detektions-Systeme AG and are used under license.



Detects 5 ng/mL THC
...in just 5 minutes.

20190425

Components and packaging



Features

- Low sample volume (< 10 µL)
- Quick sampling time for operator safety (< 5 seconds)
- Rapid results (< 5 minutes)

Cut-off concentrations

Cut-off concentrations are measured in ng/mL of saliva and is the concentration at which at least 90% of the results with the appropriate DrugWipe will show positive.		DrugWipe 5S [ng/ml]	DrugWipe 6S [ng/ml]
	Cannabis		
	Δ9-THC	5	10
	Amphetamines		
	d-Amphetamine	80	80
	d-Methamphetamine	80	80
	Cocaine	10	10
	Opiates		
	Morphine	10	10
	Benzodiazepines		
	Diazepam	-	5

Test runtime:
5 minutes



Accuracy, simplicity,
ease of use

DrugWipe S is the preferred choice by police and is used worldwide for over ten years in Australia and Europe and more recently in the United Kingdom for roadside screening in drug impaired driving cases.

The DrugWipe line of drug detection devices are designed for professional use for on-site detection of drugs of abuse in impaired driving, trafficking, possession, transport and workplace safety matters. DrugWipe testers can detect drugs in saliva, sweat and on surfaces.

The DrugWipe test cassettes can be configured from one to a combination of six drug groups, including cannabis, benzodiazepines, cocaine, opiates, amphetamines, methamphetamines and ketamine.

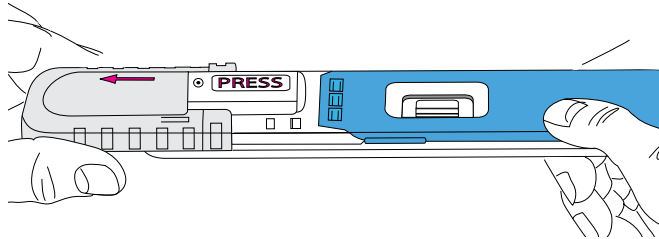
Oral fluid (saliva) is an ideal media for roadside testing of drug impaired driving, offering simplicity of use, subject compliance, quick determination and accuracy of results. DrugWipe S requires only a 10 μ L sample, taken with a simple swipe of the tongue.

DrugWipe S test cassettes are manufactured by Securetec Detektions-Systeme AG and undergo extensive quality control tests in their own laboratories before and after sale. They have also been validated by an independent ISO 17025 accredited testing laboratory for specificity, sensitivity and accuracy.

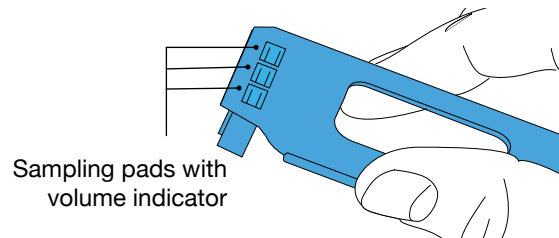
How to use DrugWipe S

1 Ensure package is sealed before starting the test.

2 Slide the cover in the direction of the arrow until the word PRESS is entirely visible.

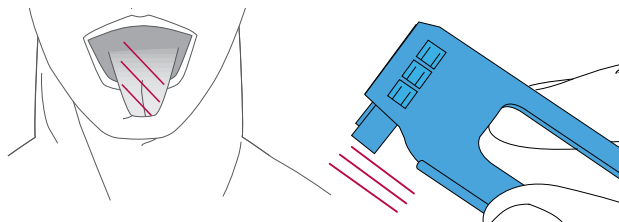


3 Remove the blue sample collector from the white test cassette, **without touching the sampling pads**.

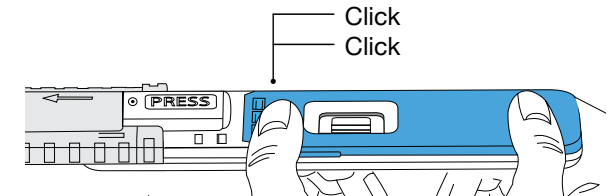


4 Ask the subject to circle the inside of their mouth with their tongue 3 times. Use the sample collector to wipe saliva from the tongue or the inside of the cheek.

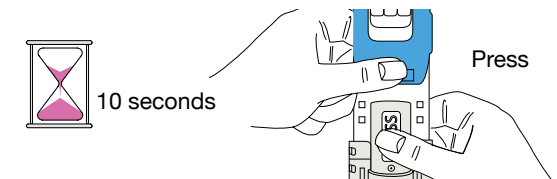
The color of the sampling pads turns from red to yellow to indicate that the sample was collected successfully.



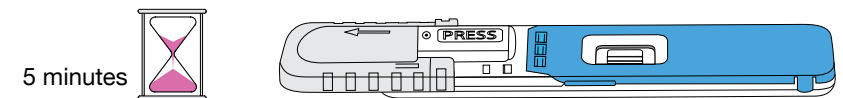
5 Place the sample collector back on the cassette. An **audible double click** indicates that the sample collector is connected securely.



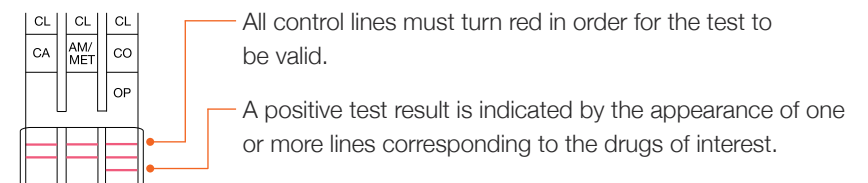
6 Hold the test cassette vertically with the ampoule at the bottom. Using your thumb, press hard on the word PRESS until the ampoule breaks. **Continue to hold the test cassette for 10 seconds.**



7 Place the test on a level surface and leave undisturbed. Read the test results after 5 minutes.



8 Observe the test results



Bad Salzufen, 22th of November 2016

CERTIFICATE

Validation of the saliva drug testing device DrugWipe® 5 S (Art. Nr. S 505 G)
manufactured by Securetec-Detektions-Systeme AG, Neubiberg, Germany.

Analytical Report

40 negative and 40 positive tests have been performed with the above device for each parameter with pooled and spiked saliva.

The performance of the devices DrugWipe® 5 S was evaluated according to the official instructions. All negative and positive test results were read within 5 minutes.

Results

	THC (CA)	D-Amphetamine (AM)	D-Methamphetamine (MET)	Cocaine (CO)	Morphine (OP)
Specificity	100%	100%	100%	100%	100%
Sensitivity	93%	100%	100%	100%	100%
Accuracy	96%	100%	100%	100%	100%

The following concentrations were requested for testing.

	CA (ng/mL)	AM (ng/mL)	MET (ng/mL)	CO (ng/mL)	OP (ng/mL)
Negative control	0	0	0	0	0
Cut-off -75%	1,25	20	20	2,5	2,5
Cut-off	5	80	80	10	10
Cut-off +75%	8,75	140	140	17,5	17,5

Determination of specificity.

The following concentrations were requested for **negative tests** (negative control/ cut-off -75%):

Delta9-THC	0 / 1,25	ng/mL
D-Amphetamine	0 / 20	
D-Methamphetamine	0 / 20	
Cocaine	0 / 2,5	
Morphine	0 / 2,5	

Using pooled and spiked saliva samples the following concentrations were measured by LC-MS/MS:

Delta9-THC	< LOQ (1,1) / 1,26	ng/mL
D-Amphetamine	< LOQ (2,3) / 20,7	
D-Methamphetamine	< LOQ (1,1) / 20,0	
Cocaine	< LOQ (0,7) / 2,60	
Morphine	< LOQ (1,0) / 2,51	

Determination of sensitivity.

The following concentrations were requested for **positive tests** (cut-off/cut-off +75%):

Delta9-THC	5 / 8,75	ng/mL
D-Amphetamine	80 / 140	
D-Methamphetamine	80 / 140	
Cocaine	10 / 17,5	
Morphine	10 / 17,5	

Using pooled and spiked saliva samples the following concentrations were measured by LC-MS/MS:

Delta9-THC	5,09 / 8,84	ng/mL
D-Amphetamine	81,0 / 141	
D-Methamphetamine	83,2 / 146	
Cocaine	9,81 / 17,4	
Morphine	10,1 / 17,8	

Accreditation

The laboratory Krone has a forensic accreditation for drug testing in saliva according to DIN EN ISO/IEC 17025.



Prof. Dr. med. Bertin Dufaux

Also available

WipeAlyser® Portable analysis device

It is ideal for roadside screening and drug screening in the workplace, WipeAlyser is a portable analysis device for the detection of drugs in combination with DrugWipe® S.



How does it work?

WipeAlyser is easily controlled with the integrated touch display. Entries can be made with either a finger or the supplied stylus. You will be guided through the device operation step by step. Once the prepared test cartridge is inserted into the device, analysis and reliable results are provided in seconds and read electronically.

Why use a WipeAlyser?

- Ergonomic for mobile use
- Memory to store analysis and documentation
- Autonomy due to long battery life
- Integrated scanner for reading barcodes (optional)
- Intuitive navigation through the analysis process
- Automatic date and location via GPS



DrugWipe® A Universal drug screener

DrugWipe A test cassette has multi-purpose testing capabilities; sweat, saliva, surfaces—it can test them all! This screener is well suited for situations where error is not an option.

Confirmatory testing

A positive indication of drug use on the DrugWipe S may require confirmatory testing by a forensic laboratory for prosecution. It is essential to collect a biological sample (blood or saliva) concurrent with the event to minimize the extent of metabolism of the drugs and the reduction of the measurable concentrations.

The saliva collection kit may be used immediately after a positive detection to collect a biological sample for analysis and evidentiary confirmation.

